

- AI Video Motion Detection
- AI Privacy Guard
- AI Sound Classification
- AI Face Detection
- AI People Detection
- AI Vehicle Detection
- i-PRO Active Guard



Install Various types of applications to keep your i-PRO network camera on the cutting edge.

There are many types of AI applications that can be installed on network cameras at no additional cost. Although i-PRO network cameras are edge devices, they are in charge of various detection processes. As a result, the camera is responsible for the advanced processing and the server does not require expensive hardware.

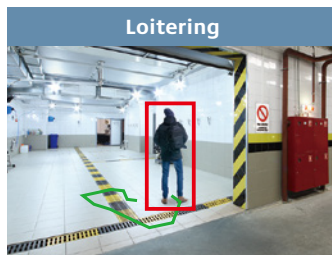
i-PRO AI applications

AI Video Motion Detection (AI-VMD)

- AI differentiates between vehicles, motorcycles, bicycles, and people. It further detects and sends warning notifications when they enter a specified area.



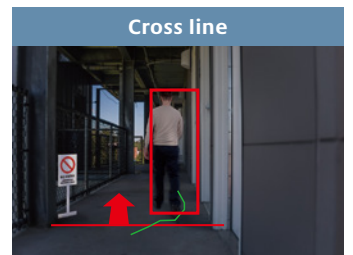
- It is possible to issue an alarm when a moving object enters a specified area.



- It is possible to issue an alarm when a moving object enters a specified area and stays there for a specified amount of time.



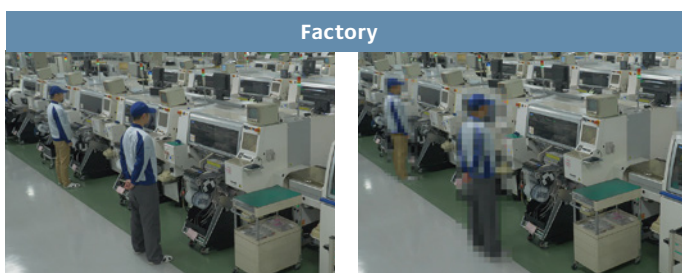
- It is possible to issue an alarm when a moving object enters a specified area and moves in the specified direction.



- It is possible to issue an alarm when an object moving in the specified direction crosses a specified threshold.

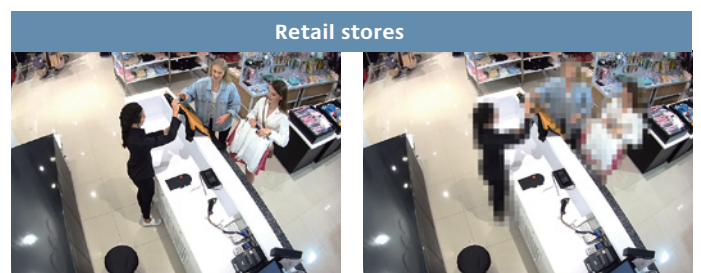
AI Privacy Guard

- To protect privacy and portrait rights, it is possible to automatically apply a mosaic the entire face and figure of a person photographed by the camera.



Original image

Processed image

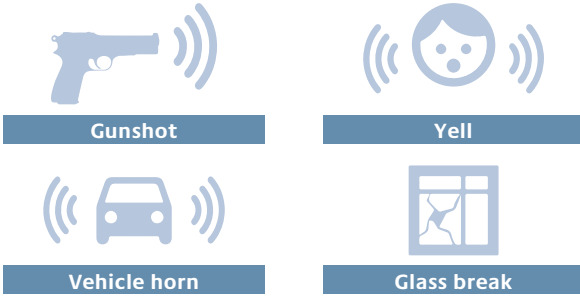


Original image

Processed image

AI Sound Classification

- AI detects and identifies (gunshot / yell / vehicle horn / glass break) sound. It then sends a warning notification according to the sound identified.



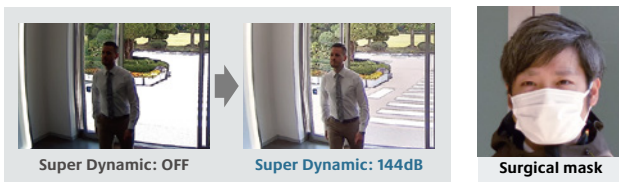
| | |
|---------------------------------|---|
| Classification target | 1.Gunshot 2.Yell 3.Vehicle horn 4.Glass break |
| Classification condition | Target sound is 6 dB louder than crowd. Target sound continues more than a second. (except for gunshot) |

External microphone is required.*

*Frequency characteristics: support 200 Hz to 8 kHz, Omnidirectional microphone.

AI Face Detection

- The i-PRO network camera utilizing an AI engine and i-PRO Active Guard realize real-time face recognition without an expensive face recognition server. AI detection enables highly accurate face detection, and is also effective for detection in low lighting, backlit environments, or for detecting faces obscured by masks.

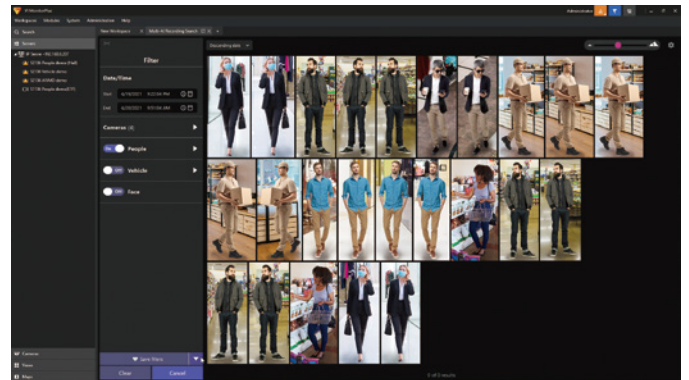


| | |
|--|--|
| Range of angle | Horizontal : 0° - 45°, Vertical : 0° - 30° |
| Detection number at the same time | Max. 8 faces |
| Size of face image | Min. size : width 30 pix Recommend : 60 pix |
| Min. illumination level | 100 lux |
| Max. number of cameras | 20 when installed with VMS server PC 60 when installed in dedicated server PC |
| Max. number of watchlist | 1,000 faces |
| Recommended model | WV-S1136, WV-S1536LTN, WV-S2536LTN |

AI People Detection

- Characteristics of the human face and clothing are extracted and classified into useful categories such as gender, age, and clothing color. This abundant attribute information can then be searched to easily find the target person.

| Attributes | Values |
|---------------------|---|
| Gender | Male / Female |
| Age | Child (0-10) / Young Adult (11-20) / Adult (21-60) / Senior (61+) |
| Mask | Mask / No Mask |
| Hair type | Long hair / Short hair / Hat |
| Hair color | Black / Brown / White / Gray / Gold |
| Sunglasses | Sunglass / No Sunglasses |
| Beard | Beard / No Beard |
| Top type | Long sleeves / Short sleeves |
| Top color | Black / Brown / White / Gray / Green / Red / Blue / Yellow / Orange / Purple / Pink |
| Bottom type | Long / Short |
| Bottom Color | Black / Brown / White / Gray / Green / Red / Blue / Yellow / Orange / Purple / Pink |
| Bag | Bag / No Bag |
| Bag color | Black / Brown / White / Green / Red / Blue / Yellow / Orange / Purple / Pink |
| Shoes color | Black / Brown / White / Green / Red / Blue / Yellow |



| | | |
|---------------------------------------|--|---|
| Conditions | Range of angle | Vertical: 0° to 45° |
| | Detection number at the same time | Max. 20 people |
| | Size of people image | Min. size: width 60 pix Recommended size : width 100 pix |
| | Min. illumination level | Min. illumination level : 10 lux Recommended illumination level : 50 lux |
| Mask Area (non-detection area) | | Max. 8 areas (polygonal) can be set |

AI Vehicle Detection

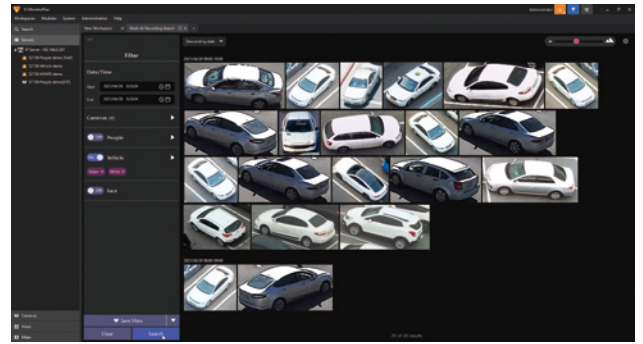
- Vehicle characteristics are extracted and classified into useful categories such as type and color. This abundant attribute information can then be searched to easily find the target vehicle.

Vehicle Type

Truck
 Bus
 SUV
 Van
 Sedan
 Pickup Truck
 Two-Wheel

Vehicle Color

Black
 Brown
 White
 Gray
 Red
 Blue
 Yellow
 Green
 Purple
 Pink

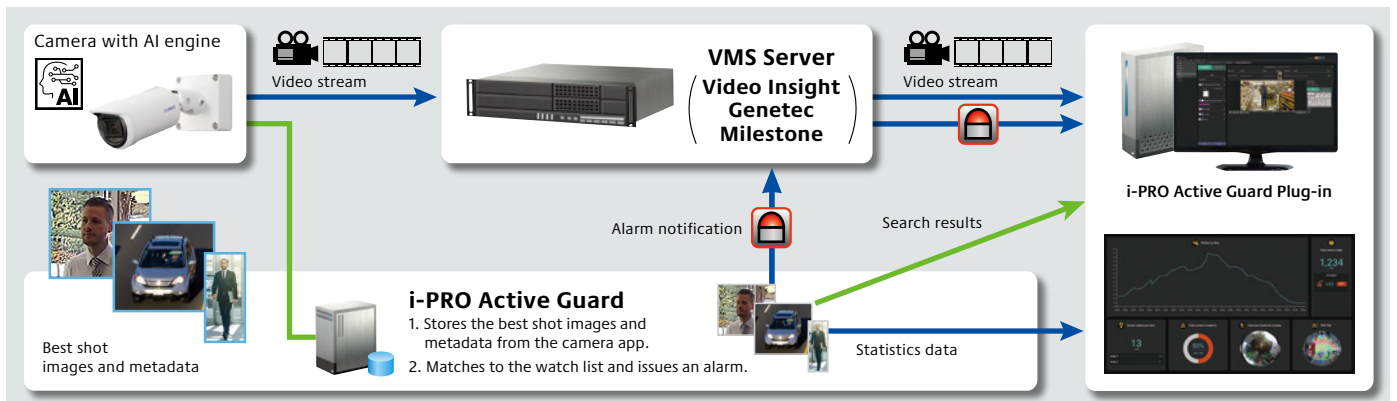


| | | |
|--------------------------------|-------------------------------------|--|
| Conditions | Range of angle | Vertical: 0 to 90° |
| | Detection number at the same time | Max. 20 vehicle |
| | Size of vehicle image | Min. size: 70 pix for the shorter axis (about 15-20 m ahead) Recommended size: 112 pix for the shorter axis |
| | Min. illumination level | 5 lux |
| Mask Area (non-detection area) | Max. 8 areas (polygonal) can be set | |

i-PRO Active Guard

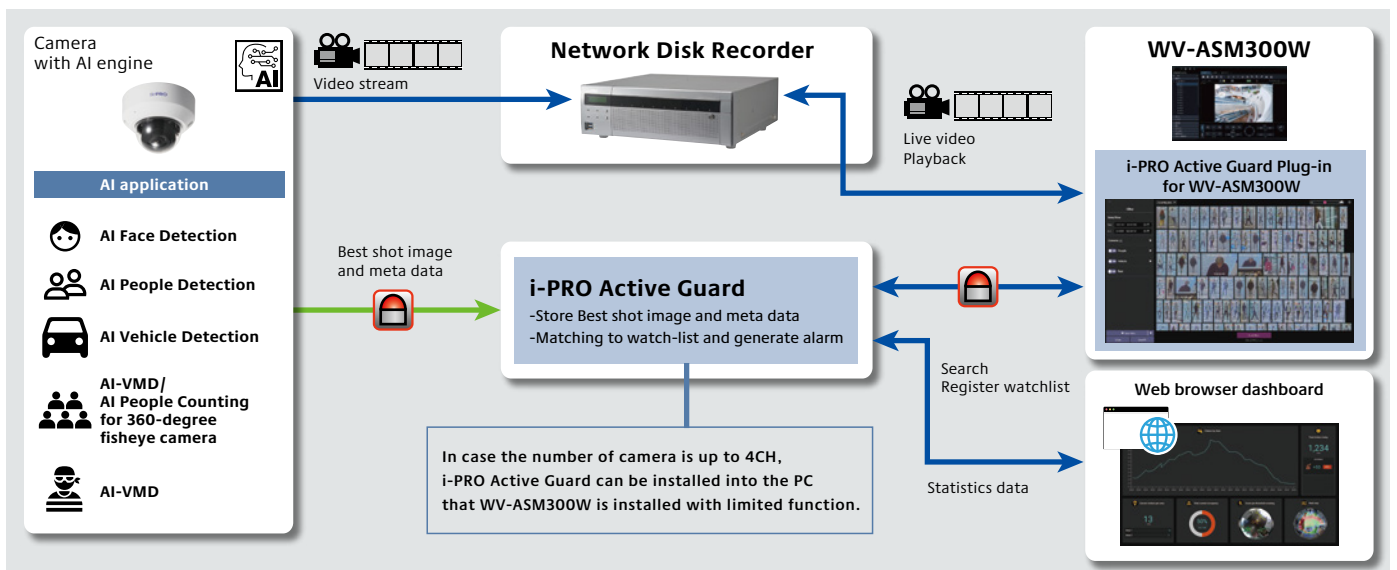
- The i-PRO Active Guard stores the best images and metadata captured by i-PRO network cameras, then collates this data with the watch list registered in the client software and issues an alarm when a match is found. The server does not require expensive hardware because i-PRO network cameras handle the advanced processing. The server can even be installed on the same hardware as the VMS. The system comprises the i-PRO Active Guard, the AI application installed on i-PRO network cameras utilizing AI engines, and i-PRO Active Guard Plug-in software for the VMS client.

Example of a basic system connection for Video Insight / Genetec / Milestone



To use the system for Milestone, i-PRO Active Guard Plug-in for XProtect developed by ORBNET SYSTEM LTD is required. <https://www.milestonesys.com/marketplace/i-pro-co.-ltd/>

Example of a basic system connection for WV-ASM300W/Network disk recorder



| | | Video Insight system | Genetec system | Milestone system | WV-ASM300W/ Network disk recorder system | |
|------------------------------------|---------------------------|---|---|---|---|--|
| System (i-PRO Active Guard) | Scale | Supported camera | i-PRO network camera with AI engine | | | |
| | | Number of camera | 1 to 100 CH when installed with VMS server (AI Face Detection is up to 20) 1 to 300CH when installed in dedicated server (AI Face Detection is up to 60) | 1 to 300CH when installed in dedicated server (AI Face Detection is up to 60) | 1 to 4CH when installed with WV-ASM300W (AI Face Detection is up to 4) 1 to 300CH when installed in dedicated server (AI Face Detection is up to 60) | |
| | | Number of client | No limitation (depending on limitation of VMS) | | | |
| | | Number of Recording server | 12 VI IP servers | - (only main server should be registered) | - (Management server should be registered) | 12 Network disk recorders |
| | | Number of i-PRO Active Guard server per a client | No limitation (depending on capability of whole system) | | 1 | 100 |
| | Supported AI applications | For plugin | AI-VMD / AI Sound Classification / AI Face Detection / AI People Detection / AI Vehicle Detection | AI Face Detection / AI People Detection / AI Vehicle Detection | AI Face Detection / AI People Detection / AI Vehicle Detection | AI-VMD / AI Sound Classification / AI Face Detection / AI People Detection / AI Vehicle Detection / AI-VMD/ AI People Counting for 360-degree fisheye camera |
| | | For dashboard | AI Face Detection / AI People Detection / AI Vehicle Detection / AI-VMD/AI People Counting for 360-degree fisheye camera | | | |
| | Store | Retention period | Max. 31 days limitation for face, people or vehicle data Max. 92 days limitation for people counting data | | | |
| | Post Search | Filter | People, Vehicle (attribute, date & time, camera, moving direction) Face (similar face, date & time and camera) LPR | People, Vehicle (attribute, date & time, camera, moving direction) Face (only for specific date & time and camera) | People, Vehicle (attribute, date & time, camera, moving direction) Face (similar face, date & time and camera) | |
| | | Similar search | Yes (by same attribute information) *People and Vehicle (by same attribute information) and Face | Yes (by same attribute information) *People and Vehicle only | Yes (by same attribute information) *People and Vehicle (by same attribute information) and Face | |
| | | Sort | Descending, Ascending, Relevance (People and Vehicle only) | | | |
| | Alarm | Watch list alarm | Up to 1,000 face Up to 12 people attributes | | Up to 1,000 face, Up to 12 people attributes. *i-PRO Active Guard server V1.5.0 or later is required. | Up to 1,000 face Up to 12 people attributes |
| | | Detection alarm | AI Sound Classification (Gunshot / Yell / Vehicle horn / Glass break) AI-VMD (Intruder / Loitering / Direction / Line cross) LPR, VCA, Access Control | AI-VMD, AI Sound Classification are supported in Genetec Security Center and Security Desk (not plugin) | AI-VMD are supported in XProtect (not plugin) | AI Sound Classification (Gunshot / Yell / Vehicle horn / Glass break) AI-VMD (Intruder / Loitering / Direction / Line cross) / AI Occupancy detection |
| | | Related function | Show alarm on real-time, Alarm search, VMS's Rules configuration, Map overlay, Notification to mobile app, Manage alarm status | | | Alarm destination (plugin or camera) and alarm trigger can be configured. Show alarm on real-time, Alarm search, Manage alarm status, AUX control of camera |
| | Playback/ Export | Playback | Playback video around the time of the best shot on full and multi-view | | Playback video around the time of the best shot on full screen | |
| Export video | | Save best shot image, Export video from Recording server | | | | |
| Export Search result | | HTML and CSV | HTML | — | HTML and CSV | |
| Dashboard | Supported browser | Microsoft Edge, Google Chrome and Firefox | | | | |
| | Chart | People counting and heat map when using AI-VMD/AI People Counting for 360-degree fisheye camera. Data update interval is minimum 15 seconds for people counting and 1 min for heat map. Age and gender statistics when using AI Face Detection. Data update interval is minimum 1 hour. People attribute statistics when using AI People Detection. Data update interval is minimum 1 hour. Vehicle attribute statistics when using AI Vehicle Detection. Data update interval is minimum 1 hour. | | | | |
| | Customize | Contents, display size, location for each chart. 3 Layouts per user can be saved and 24 user can be registered. (Up to 4 user can be log-in at the same time) Basic display color theme (dark or light) | | | | |

Trademarks and registered trademarks

- All other trademarks identified herein are the property of their respective owners.

Important

- Safety Precautions : Carefully read the Basic Information, Installation Guide and Operating Instructions before using this product.
- i-PRO Co., Ltd. cannot be held responsible for the performance of the network and/or other manufacturers' products used on the network.
- When monitoring remotely, please pay attention to the network design. For details, please contact your local i-PRO sales representatives.

• All images are for illustrative purposes only. • Specifications are subject to change without notice.



i-PRO Co., Ltd.

<https://i-pro.com/>

(2A-286DA)