

Panasonic

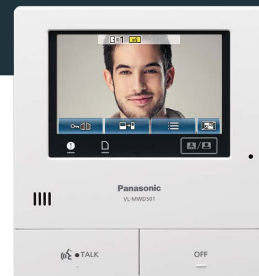
Preliminary

Wireless Video Intercom System VL-SWD501EX/UEX



Anywhere

Flexibly



The Panasonic Wireless Video Intercom System watches over the safety of your entire house



Main Monitor Station
(Main monitor)



Wireless Monitor Station
(Sub monitor)



Wireless Sensor Camera



Optional Accessory

Door Station
(Doorphone)



Electric lock release support for gate



Panasonic introduces a video intercom that uses wireless communication to keep your entire house safe. The handy sub monitor can be easily carried about, so you can greet visitors from anywhere in the house, and check conditions at any location you want. You can also add on the optional Wireless Sensor Cameras and the sub monitors, and they're all wireless, so no wiring work is needed and installation is fast and easy. This flexible system lets you install the cameras and monitors wherever you want, to match your family's needs. A recording function is also included, so safety is assured even while you're away from home. See how wonderful it is to feel safe, sound and comfortable.

Why Wireless?

Anywhere convenience

Greet visitors from anywhere in the house.

Easy use

The sub monitors can be easily and flexibly installed, with no wiring work required.

Solid safety

You can check anywhere you want, from any location, with easy wireless operation.



Feel comfortable everywhere in the house



Wireless Operation

It's wireless, so you can move around the house freely without having to worry about cords. You can greet visitors from places in the house that are within the range of the main monitor signal. And you can also add on up to six sub monitors.



SD Card Recording

You can automatically record video images of visitors while you're away from home. It will record up to 3,000 visitors (30 seconds per visitor). This shows you details that aren't possible with still images. And you can save and play the images on a PC that has an SD card slot.

* The SD Memory Card is sold separately. Please use an SD Memory Card with a capacity of 2 GB or more.
 ** The number of recordings is an estimate for use as a guide only. When the card becomes full, images will be automatically deleted, starting with the oldest, to record new images.



Slim Design

Only 21 mm deep, the main monitor has a slim design that blends in with virtually all room interiors. The stylish doorphone allows both mounted and mount-free use. Choose the type of use that matches your installation conditions and your home's design.

21mm



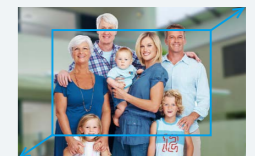
Large Touch Panel

The main monitor has a large, 5-inch wide screen that clearly shows each visitor's face. If it is difficult to see, simply touch the screen to activate an approximate 2x zoom horizontally and vertically. This makes it easy for everyone to see, and provides an easy-to-use operating screen.



Wide-Angle Camera

The doorphone features an wide-angle lens that covers approximately 170 degrees horizontally and 115 degrees vertically. It gives you images with minimal distortion regardless of the number of people being viewed, or the height of each person. The wide range also increases freedom for choosing the installation location.



More ways to fit your lifestyle

UP TO
6

Easily Add on up to Six Sub Monitors

The wireless design means that there is no troublesome wiring required when adding on to the system as well. Simply make the settings quickly and easily on the screen. You can add on up to six sub monitors for easy use for large homes, and easily confirm visitors from a monitor in each room.



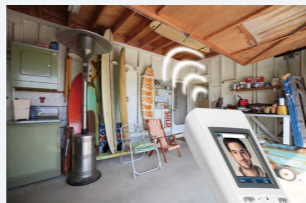
Easy Installation for Wireless Sensor Cameras

By installing the optional DECT Wireless Sensor Camera, you can use human (heat) and motion sensors to monitor locations that you are concerned about. At night, a white LED shines to drive intruders away. There is no need to wire it to the doorphone. Installation is possible wherever there is a power supply.



Easy Extension

The use of an optional DECT Repeater extends the communication. It can be extended with a maximum of two DECT Repeaters to reach places like garages, backyards, and gardens with stable communication.

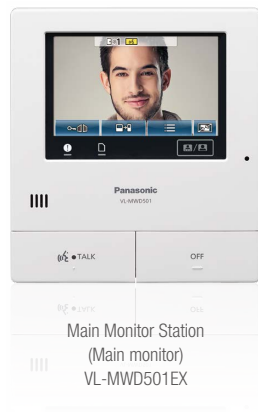


Dual Electric Lock Release Support for Gate

The electronic lock release features two systems, each of which can be operated from the main monitor or a sub monitor. The gate or door lock can be easily and quickly released even from the second floor of the house.



Wireless Video Intercom System



Up to
2



Up to
6

System Models

VL-SWD501EX	✓	✓ (VL-V554EX)	✓
VL-SWD501UEX	✓	✓ (VL-V554UEX)	✓

Specifications

Power Source	DC 24V	Supplied by the main monitor	Nickel metal hydride battery (2 X AAA size)
Power Supply	VL-PS240 (AC220 - 240V)		AC Adaptor(AC220 - 240V)
Power Consumption (Approx.)	T.B.D.	T.B.D.	T.B.D.
Display (Approx.)	5-inch wide colour LCD (touch panel type)	—	2.2-inch TFT colour LCD
Dimensions (Approx.) (height x width x depth)	180 mm x 165 mm x 21 mm (excluding protrusions)	VL-554EX: 169 mm×118 mm×30 mm VL-V554UEX: 169 mm×118 mm×37(16.5)* mm *Exposed surface from the wall: 16.5 mm	Main Unit: 173 mm x 52 mm x 30 mm (excluding protrusions) Charger: 43 mm x 81 mm x 76 (excluding protrusions)
Weight (Approx.)	T.B.D.	T.B.D.	T.B.D.
Conversation System	Automatic alternating voice system		
Wireless Communication System	1.9 GHz TDMA-WB	—	1.9 GHz TDMA-WB
Recording Capacity*1	Hard memory: Continuous 8 x 50 ^{*2} SD Memory Card: Approx. 30-sec video x Max. 3,000 recordings*3	—	—
Installation Method	Exposed wall mounting (wall-mounting bracket included)	Exposed wall mounting (wall-mounting bracket included)	—
Camera / Lens	—	Minimum subject illumination: 1 lux (within approx. 50 cm from the camera) Angle of view (approx.): Wide: 170° horizontal/95° vertical Zoom: 85° horizontal/45° vertical Overall: 170° horizontal/115° vertical	—
Water Proof / Dust Proof	—	IP54	—
Usage Environment	Ambient temperature: 0-40°C, Humidity: 90% max.	Ambient temperature: -10-50°C, Humidity: 90% max.	Ambient temperature: 0-40°C, Humidity: 90% max.
Included Accessories	AC Adaptor (2), Rechargeable batteries (2), Battery Cover, Charger		

*1 The number of recordings is an estimate for use as a guide only.

*2 An SD card is required for wireless camera recording. Wireless camera images cannot be recorded onto the main monitor memory.

*3 Wireless camera recording captures consecutive still images at approximately 1-second intervals.

Optional Accessories



Up to
4

**Wireless
Sensor Camera
VL-WD812EX**

Power Source: DC 24V
Power Supply: VL-PS240 (AC220-240V)
Dimensions(Approx.)(height x width x depth): 160 mm x 118 mm x 290 mm (When installed facing forward, including the wall mount bracket)
Power Consumption: T.B.D.
Weight: T.B.D.
Lens: CMOS 320,000 pixels
Sensor Detection: Pyroelectric current infrared sensor (human (heat) sensor) and motion detection
Water Proof/Dust Proof: IP54
Usage Environment: Ambient temperature: -20-50°C, Humidity: 90% max. (Without Condensation)



Up to
2

**DECT Repeater
VL-FKD2EX**

Power Source: DC 6.5V, 500 mA
Power Supply: AC Adaptor (AC 220-240 V)
Dimensions(Approx.)(height x width x depth): 82 mm x 111 mm x 39 mm
Weight(Approx.): 88 g
Usage Environment: Ambient temperature: 0-40°C, Humidity: 90% max.
Wireless Communication System: 1.9 GHz TDMA-WB

Recording Capacity

	2GB	4GB	8GB	16GB	32GB	48GB	64GB
Doorphone	125	255	520	1,040	2,090	3,000	3,000
Wireless Sensor Camera	2,300	3,000	3,000	3,000	3,000	3,000	3,000

■The number of recordings is an estimate for use as a guide only. ■The number of recordable pictures may vary according to surrounding environment and usage conditions. ■Wireless camera recording captures consecutive images (still images) at approximately 1-second intervals. ■An SD card is required for wireless camera recording. Wireless camera images cannot be recorded onto the Main Monitor memory. ■An SD Memory Card with a capacity of 4 GB or more is recommended when using a wireless camera. Applicable SD Memory Cards: SD, SDHC, SDXC cards with a capacity of 2 GB or more ■When using an SD Memory Card, a setting can be made to record voices during intercom conversations.

NOTE:

Trademarks and trade names are those of their respective owners. The actual product may vary slightly from photograph. All pictures of LCD display and LED lamp are simulated. Design and specifications are subject to change without notice.